



User Manual

Door Sensor

Zigbee

Model: B1DS1ZB

Index

1. Introduction
2. Technical Specifications
3. Installation
4. Device Care and Maintenance
5. Warranty

1. Introduction

The Door Sensor is a Zigbee based device designed to detect the opening and closing of doors and windows in your home. It can be easily installed following the provided instructions and integrated into your Zigbee-enabled B.One Hub. Once installed, the sensor can send notifications and trigger automations based on its activity, offering a straight forward and efficient method to monitor the security of your home.

Product Structure

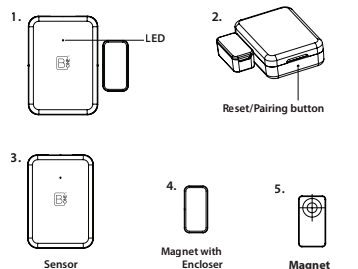


Figure 1: Product Structure

2. Technical Specifications

| Electrical | |
|-------------------|--|
| Battery | Number of Batteries: 1 Rating: 3V DC Battery Cell Composition: Lithium Type: Coin Cell Battery (CR2032) |
| Communications | |
| Protocol | HA Zigbee 3.0 |
| Transmit Power | +10 dBm |
| Working Frequency | 2400 MHz - 2483.5 MHz |
| Range | <=50 m (Line of Sight Open Area) |

Environmental

| | |
|-----------------------------|---------------|
| Maximum Sensing Distance | 15 mm |
| Operating Temperature | 0 °C to 50 °C |
| Operating Relative Humidity | <90% |

Mechanical

| | |
|--|---|
| Dimensions (LxWxT) Sensor & Magnet(mm) | Main unit: 39 x 27.5 x 11.4 mm Magnetic Sensor: 20 x 10 x 8 mm |
| B.One Plus App Supports | Android 8.0 and above/ IOS 15.0 and above |

3. Installation

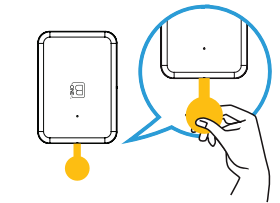


Figure 2: Removal of Insulation Film

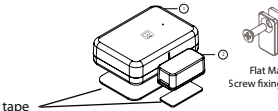


Figure 3: Installation

- Attach the double-sided mounting tapes (3M tape) provided with the product and affix the two components to the door/window frame. Flat Magnet can be used on the Side frame-based on the use case.

- To extract the battery, simply push it in this direction.

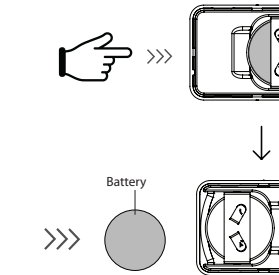


Figure 4: Installation

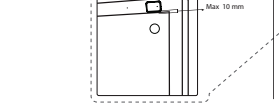


Figure 4: Installation

- After installing the Door Sensor, make sure that the distance between the Sensor and the Magnet is less than 10 mm when the door/window is in the closed position. To trigger an alert, the separation distance between the two components should be more than 20 mm for the Open status and less than 10 mm for the Closed status.

3.1 Requirements

- You will need a smartphone (Android/iOS) with the B.One Plus App installed and your account activated on it.
- The Zigbee-enabled B.One Hub is connected to your home internet router and has been added to your account in the B.One Plus App.

Get B.One Plus App at



For a detailed user manual scan the QR code below:



3.2 LED indicators

| LED | Status | Description |
|------|----------------------------------|---------------------------------------|
| Blue | Blinking 3 times | Pairing mode/inclusion mode |
| Blue | Solid for 4 Sec after 10-11 sec. | When device is paired successfully |
| Blue | Blinking 2 times | Device Deleted |
| Blue | Blink Once | Device Added and Door Open/Door Close |

3.3 Addition of the Device

Launch the B.One Plus App. From the Home screen, navigate to **Devices** > Tap on the (+) button > **Sensors, Security and Safety** > **Zigbee Devices** > **Door Sensors** > **B.One Door Sensor** and follow the Device pairing instructions.

3.4 Device Pairing

To initiate the pairing process, press and hold the Reset/Pairing button using the pin provided in the box for **3.5 seconds**. Once successfully initialized, When the device is successfully paired the device will have a **Solid Blue LED** for 4 seconds after 10-11 seconds of addition, and the app interface will show a prompt confirming the successful device addition.



Figure 5: Device Pairing

3.5 Deletion of the Device

To delete the device or to remove it from the Zigbee-enabled B.One Hub, follow these steps:

- On the B.One Plus App, select the Devices screen and tap on Edit. Select (-) icon to delete the device.
- Tap on **Delete** to confirm the device deletion. Screen displays confirmation message when it is successfully removed from the Zigbee network.

- To complete the deletion process, press and hold the Reset/Pairing button using the pin for 3.5 seconds. This will remove the device from the Zigbee network.

3.6 Factory Reset

To factory reset the device, press and hold the Reset/Pairing button using the pin for 3.5 seconds. This will reset the device.

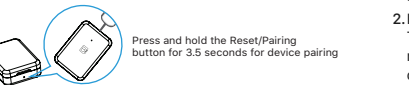


Figure 6: Factory Reset

4. Device Care and Maintenance

Correct Disposal:

Proper disposal of the Door Sensor is essential to minimize environmental impact and ensure safety. Please follow these guidelines for the correct disposal of the device:

- Do not dispose of the device into fire:** Door Sensor contains components that are combustible. Therefore, it is crucial to never dispose of the device by burning it or throwing it into a fire. This can lead to hazardous situations and environmental pollution.
- Do not dispose of the device with regular waste:** The Door Sensor should not be disposed of with regular household or municipal waste. Improper disposal may result in the device ending up in a landfill or being incinerated, which can have detrimental effects on the environment and human health.

Proper Disposal Options:

To ensure the environmentally responsible disposal of the Door Sensor, consider the following options:

- Electronic waste recycling:** Look for local electronic waste recycling facilities programs in your area. These facilities specialize in the proper handling and recycling of electronic devices. Contact your local recycling center or municipality for information on drop-off points or collection events for electronic waste.
- Manufacturer or Retailer programs:** Check if the manufacturer or retailer of the Door Sensor has a take-back program or recycling initiative in place. Many companies offer recycling services for their products to promote responsible disposal. Visit their official website or contact their customer support for more information on how to return the device for proper recycling.

By following these guidelines and responsibly disposing of the Door Sensor, you contribute to minimizing environmental impact and promoting sustainable practices.

5. Warranty

Blaze Automation warrants its products against defects in materials and/or workmanship under normal use for a period of ONE (1) YEAR from the date of purchase by the original purchaser ("Warranty Period"). If a defect arises and a valid claim is received within the Warranty Period, then as your sole remedy (and Blaze Automation's sole liability), Blaze Automation will at its option either 1) repair the defect at no charge, using new or refurbished replacement parts, or 2) replace the product with a new unit that is functionally equivalent to the original, in each case within a mutually agreed lead time between both the purchaser and Blaze, following receipt of the returned product. A replacement product or part assumes the

remaining warranty of the original product. When a product or part is exchanged, any replacement item becomes your property and the replaced product or part becomes a property of Blaze Automation.

Obtaining Service:

To obtain warranty service, speak with your point of contact at Blaze or with the authorized distributor from your country of purchase. Please be prepared to describe the product that needs service and the nature of the problem. A purchase receipt is required. The product must be insured, and shipped freight prepaid and securely packaged. You must contact Blaze for a Return Material Authorization Number ("RMA Number") before shipping any product, and include the RMA Number, a copy of your purchase receipt and a description of the problem you are experiencing with the product. Any claim under this Limited Warranty must be submitted to Blaze Automation before the end of the warranty period.

Exclusions:

This warranty does not apply to: a) damage caused by failure to follow the instructions (as explained in the user manual) relating to the product's use or the installation of components b) damage caused by accident, abuse, misuse, transport, neglect, fire, floods, earthquake or other external causes; c) damage caused by service performed by anyone who is not an authorized representative of Blaze Automation; d) accessories used in conjunction with a covered product; e) the Product or part that has been modified to alter functionality or capability; f) items intended to be periodically replaced by the purchaser during the normal life of the Product, including, without limitation, batteries, bulbs or cables; g) the Product that is used commercially or for a commercial purpose, in each case as determined by Blaze Automation.

BLAZE AUTOMATION SHALL NOT BE LIABLE FOR (1) ANY LOST PROFITS, COST OF PROCUREMENT OF SUBSTITUTE PRODUCTS, OR ANY INCIDENTAL OR CONSEQUENTIAL DAMAGES, OR (II) ANY AMOUNTS IN EXCESS OF THE PURCHASE PRICE FOR THE PRODUCT, IN EACH CASE WHETHER RESULTING FROM FROM THE USE OF OR INABILITY TO USE OF PRODUCT, OR ARISING OUT OF ANY BREACH OF THIS WARRANTY, EVEN IF COMPANY HAS BEEN ADVISED OF THE POSSIBILITY OF SUCH DAMAGES. TO THE EXTENT PERMITTED BY APPLICABLE LAW, BLAZE AUTOMATION DISCLAIMS ANY AND ALL STATUTORY OR IMPLIED WARRANTIES, INCLUDING WITHOUT LIMITATION, WARRANTIES OF MERCHANTABILITY, FITNESS FOR A PARTICULAR PURPOSE AND WARRANTIES AGAINST HIDDEN OR LATENT DEFECTS. IF BLAZE AUTOMATION CANNOT LAWFULLY DISCLAIM STATUTORY OR IMPLIED WARRANTIES, THEN TO THE EXTENT PERMITTED BY LAW, ALL SUCH WARRANTIES SHALL BE LIMITED IN DURATION TO THE WARRANTY PERIOD.

TO EXERCISE YOUR RIGHTS UNDER THIS WARRANTY, PLEASE FOLLOW THE INSTRUCTIONS ABOVE UNDER THE HEADING "OBTAINING SERVICE" OR CONTACT BLAZE AUTOMATION AT BLAZE AUTOMATION SERVICES PRIVATE LIMITED, Q2, 10TH FLOOR, CYBER TOWERS, HITECH-CITY, HYDERABAD, TELANGANA 500081, INDIA.

Reach us at:

