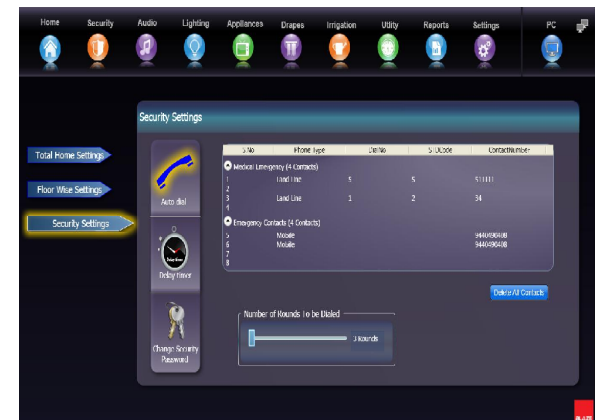
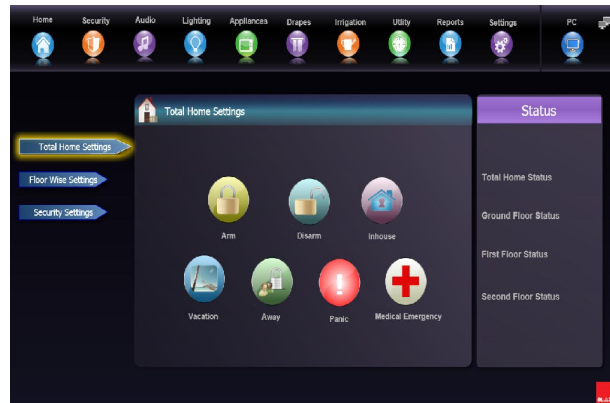
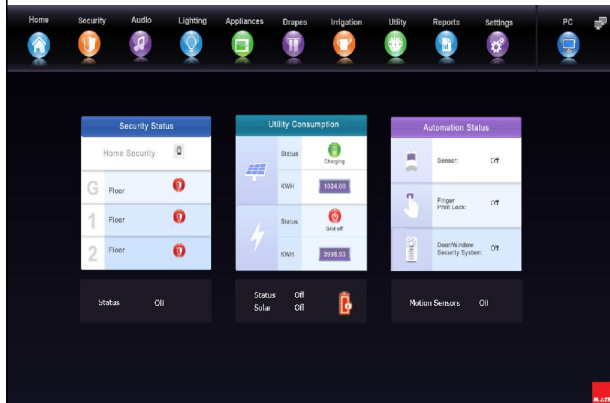








Blaze Graphical User Interface

Blaze provides extremely User friendly graphical user interface (GUI)






Home Page GUI




Home Security Audio Lighting Appliances Drapes Irrigation Utility Reports Settings PC

Security Status		
Home Security		
G	Floor	
1	Floor	
2	Floor	

Status Oil

Utility Consumption		
	Status	 Charging
	KWH	1024.00
	Status	 Grid off
	KWH	3998.93

Status Off
Solar Off 

Automation Status		
	Sensor:	Off
	Finger Print Lock:	Off
	Door/Window Security System:	Off

Motion Sensors Oil



Security GUI

Home Security Audio Lighting Appliances Drapes Irrigation Utility Reports Settings PC

Total Home Settings

Arm Disarm Inhouse

Vacation Away Panic Medical Emergency

Status

Total Home Status

Ground Floor Status

First Floor Status

Second Floor Status

- Total Home Settings
- Floor Wise Settings
- Security Settings



Security setting control GUI

Home Security Audio Lighting Appliances Drapes Irrigation Utility Reports Settings PC

Security Settings

Total Home Settings

Floor Wise Settings

Security Settings

Auto dial

Delay timer

Change Security Password

Change Security Disarm Password

Enter Security Current Password :

Enter New Password :

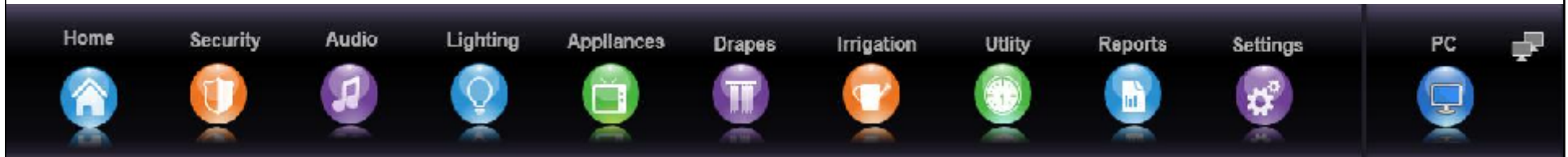
Confirm Password :

Change Security Password

1	2	3
4	5	6
7	8	9
*	0	#
Clear		

BLAZE

Emergency Contacts settings GUI



Security Settings

- Total Home Settings
- Floor Wise Settings
- Security Settings**



S.No	Phone Type	DialNo	STLCode	ContactNumber
Medical Emergency (4 Contacts)				
1	Land Line	5	5	511111
2				
3	Land Line	1	2	34
4				
Emergency Contacts (4 Contacts)				
5	Mobile			9440490408
6	Mobile			9440490408
7				
8				

Delete All Contacts

Number of Rounds to be Dialed

1 Rounds

Multizone Audio control GUI

The interface is designed for controlling audio across multiple zones. The top navigation bar allows users to switch between various home automation functions. The 'Audio' section is currently active, showing a list of zones on the left and a detailed view of the audio playback for Zone 1.

Select Zone

- Zone 1
- Zone 2
- Zone 3
- Zone 4
- Zone 5
- Zone 6
- Zone 7
- Zone 8

Album Library

	Album 1
	Album 2
	Album 3
	Album 4
	Album 5
	Album 6
	Album 7
	Album 8

Tracks

1	Welcome to the Jungle	Genre : Rock	Year : 1987	Duration : 06:00
2	Welcome to the Hollywood	Genre : Rock	Year : 1987	Duration : 06:00
3	Welcome to the TollyWood	Genre : Rock	Year : 1987	Duration : 06:00
4	Welcome to the KollyWood	Genre : Rock	Year : 1987	Duration : 06:00
5	Welcome to the Jungle	Genre : Rock	Year : 1987	Duration : 06:00

Zone 1

00:00 00:00

Play/Pause, Stop, Previous, Next, Repeat, Shuffle, Volume

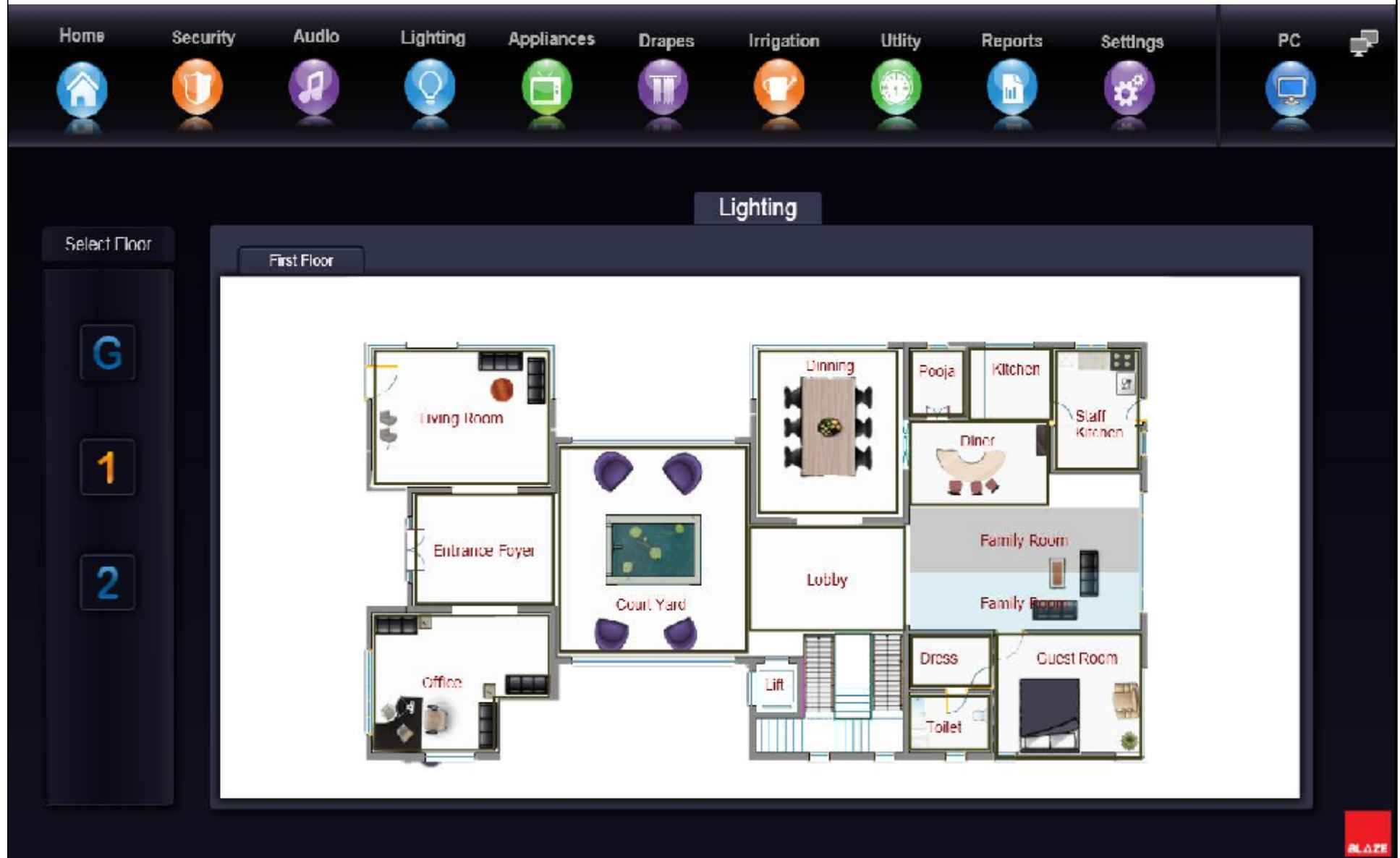
Equalizer

- Acoustic
- Blues
- Classical
- Full Treble
- Jazz
- Techno
- Reggae
- Rock
- Dance
- Opera
- Swing
- Full Bass

Effects

- Reverb
- Echo
- Default

Lighting and appliances control GUI



The interface features a top navigation bar with the following menu items: Home, Security, Audio, Lighting, Appliances, Drapes, Irrigation, Utility, Reports, Settings, and PC. The 'Lighting' menu item is currently selected.

Below the navigation bar, the 'Lighting' control panel is displayed. It includes a 'Select Floor' dropdown menu set to 'First Floor'. On the left side of the floor plan, there are three floor selection buttons: 'G' (Ground Floor), '1' (First Floor), and '2' (Second Floor). The '1' button is highlighted.

The main area shows a detailed floor plan of the first floor with various rooms labeled: Living Room, Entrance Foyer, Office, Dining, Poola, Kitchen, Staff Kitchen, Diner, Family Room, Family Room, Lobby, Lift, Dress, Toilet, and Guest Room. The 'Court Yard' is also visible in the center of the plan.

A small 'BLAZE' logo is located in the bottom right corner of the interface.